



CBI  
*Ministry of Foreign Affairs of the Netherlands*

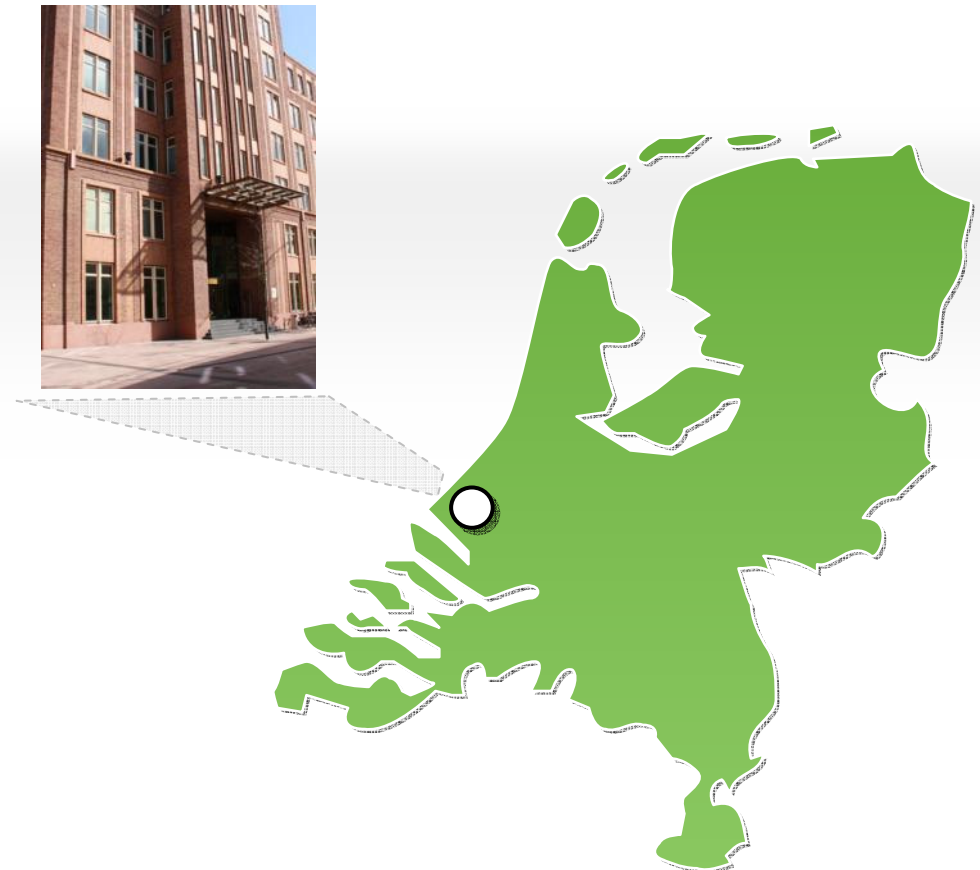
**CBI**

Centre for the Promotion  
of Imports from  
developing countries



## Facts and Figures

- 1971: CBI was established by the Ministry of Foreign Affairs of the Netherlands
- 1998: Agency
- 60 employees
- Worldwide network of 250 experts
- Order book until 2015  
150 million euros



## Mission and Vision

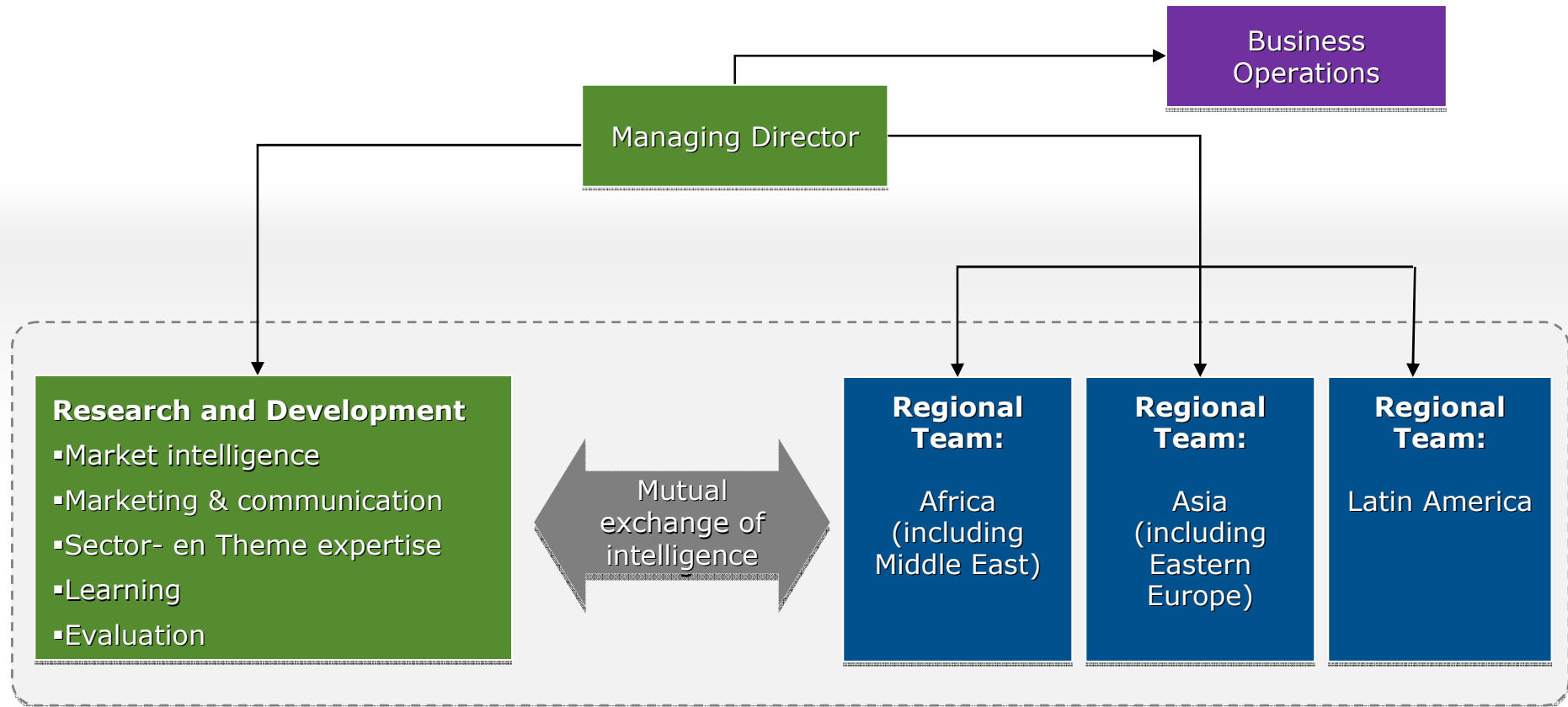
### Mission

Contribute to **sustainable economic development** in developing countries through the expansion of exports from these countries

### Vision

CBI is **THE expert** in export development and export promotion from developing countries

## Organisation Chart





## Countries

### Current CBI countries

- Afghanistan, Albania, Armenia, Bangladesh, Benin, Bolivia, Bosnia-Herzegovina, Burkina Faso, Burundi, Colombia, Egypt, Ethiopia, Georgia, Ghana, Guatemala, Indonesia, Kenya, Kosovo, Madagascar, Mali, Macedonia, Moldova, Mongolia, Morocco, Mozambique, Nepal, Nicaragua, Pakistan, Peru, Philippines, Rwanda, Senegal, Sri Lanka, Surinam, Tanzania, Thailand, Tunisia, Uganda, Vietnam, Zambia, South Africa

### New countries 2009

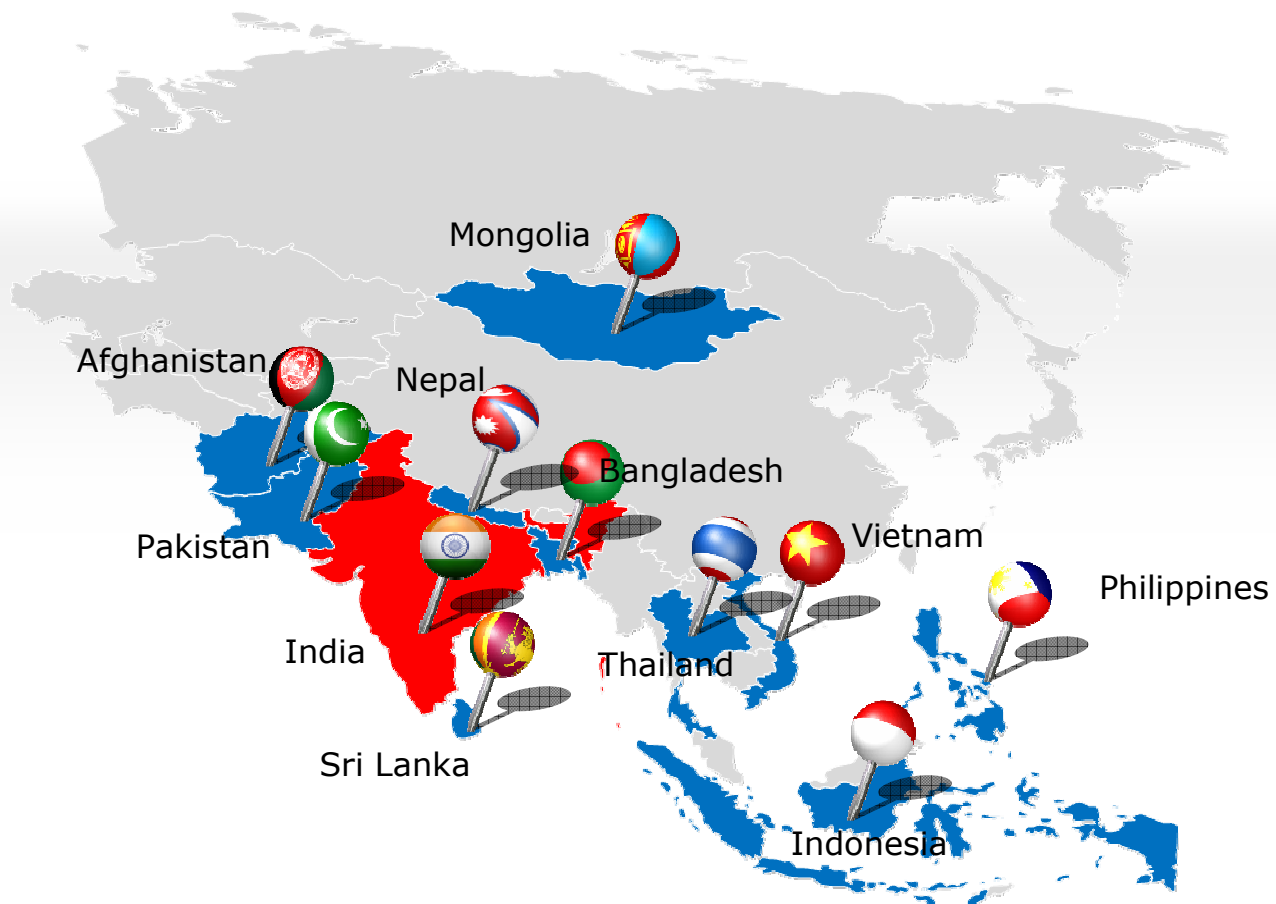
- Cape Verde, Democratic Republic of the Congo, Malawi, Mongolia, Palestinian territories, Sudan (south), Yemen

### Countries with exit strategy

- Ecuador, El Salvador, Honduras, India, Jordan, Montenegro, Serbia



# Asia





## Sectors

### Agricultural



- Fresh fruit and vegetables
- Timber and timber products
- Wine
- Etc.

### Industrial



- Automotive
- Castings and forgings
- Medical equipment
- Etc.

### Consumer



- Office and school supplies
- Home textiles
- Garments
- Etc.

### Services



- Tourism
- Business Process Outsourcing
- IT Outsourcing
- Etc.



## Corporate Social Responsibility





## Strategy



**Promising sectors and markets** form the basis



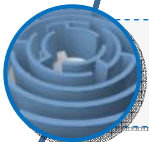
Offering a **tailor-made approach on country level**, of the framework set by our principal



To increase efficiency and effectiveness we **work together with or link into other organisations**



CBI services are **need orientated and applicable in practice**



**Anticipate pro actively and result driven** to identified trends and developments



Our services offer **information, knowledge and skills, cooperation and exchange of knowledge**

## Modules

### ECP Modules



- SMEs
- Increase of the competitive capacity

### BSOD Modules



- BSOs
- Improved sustainable service provision

### MI Modules



- SME en BSOs
- Effective implementation of the available information

### HRD Modules



- SME en BSOs
- Effective implementation of export knowledge and export skills



## More information



### Postal address

P.O. Box 93144, 2509 AC The Hague  
the Netherlands



### Visiting address

Prinses Beatrixlaan 2  
2595 AL The Hague



+31 (0)88 60 24 300



+31 (0)88 60 24 301



[cbi@cbi.eu](mailto:cbi@cbi.eu)



[www.cbi.eu](http://www.cbi.eu)

